



ARDMORE ARARIMU HUNUA 60 KM

<https://www.strava.com/routes/2749177867552793164>

60.12 km

Distance

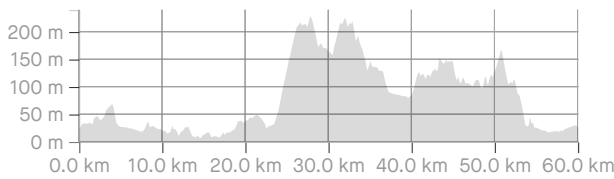
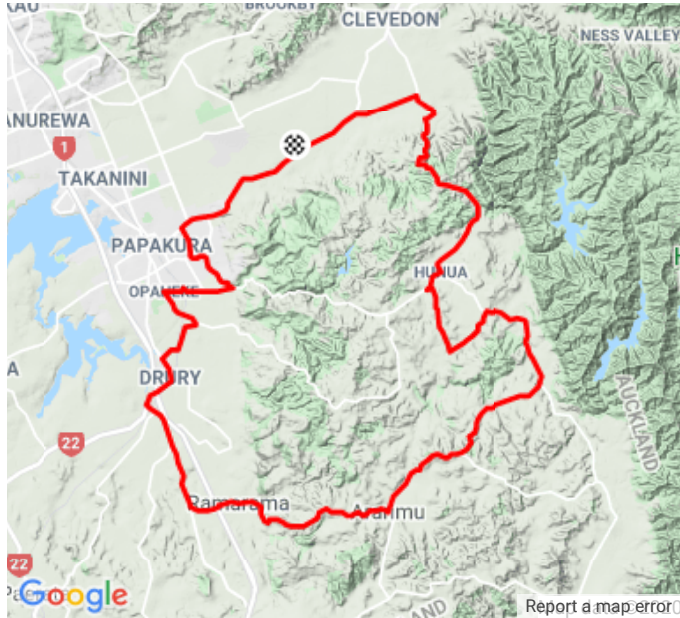
846 m

Elevation Gain

Road

Ride Type

Est. Moving Time: 2:24:47



Route recommendations may be incomplete and/or inaccurate and may contain sections of private land and/or sections of terrain that could be challenging or hazardous. Always use your best judgement about the safety of road and trail conditions and follow traffic and property laws. Est. Moving Time based on your avg speed of 24.9 km/h over last 4 weeks

DIRECTION	DISTANCE (kilometers)
Proceed onto Burnside Road	0.0
Right onto Papakura–Clevedon Road	0.3
Proceed onto Papakura–Clevedon Road	1.0
Proceed onto Papakura–Clevedon Road	3.7
Continue on Clevedon Road	4.6
Proceed onto Clevedon Road	5.5
Left onto Kelvin Road	5.7
Proceed onto Kelvin Road	6.7
Left onto Settlement Road	6.8

Right onto Dominion Road	7.2
Proceed onto Dominion Road	8.4
Right onto Hunua Road	8.8
Proceed onto Hunua Road	9.1
Left onto Boundary Road	9.7
Proceed onto Opaheke Road	11.2
Right onto Sutton Road	12.9
Proceed onto Sutton Road	13.0
Proceed onto Great South Road	14.9
Continue on null	15.7
Continue on Great South Road	15.7
Proceed onto Great South Road	17.0
Continue on null	17.0
Left onto Great South Road	17.1
Proceed onto Great South Road	21.0
Continue on null	21.0
Continue on Ararimu Road	21.1
Proceed onto Ararimu Road	26.3
Proceed onto Ararimu Road	29.1
Left onto Gelling Road	32.8
Proceed onto Gelling Road	36.7
Left onto Hunua Road	36.9
Proceed onto Hunua Road	40.2
Left onto Cowan Road	40.8
Proceed onto Cowan Road	41.0
Right onto Heald Road	42.8
Proceed onto Heald Road	43.2
Proceed onto Heald Road	45.2
Right onto Hunua Road	45.4
Proceed onto Hunua Road	45.9
Left onto John Hill Road	46.2

Proceed onto John Hill Road	46.8
Continue on Skyhigh Road	47.8
Proceed onto Skyhigh Road	48.9
Continue on Monument Road	50.8
Proceed onto Monument Road	53.4
Proceed onto Monument Road	55.2

Left onto Tourist Road	55.3
Continue on Papakura–Clevedon Road	57.5
Proceed onto Papakura–Clevedon Road	59.5
Right onto Burnside Road	59.8
Proceed onto Burnside Road	60.0
Arrive at Finish	60.1